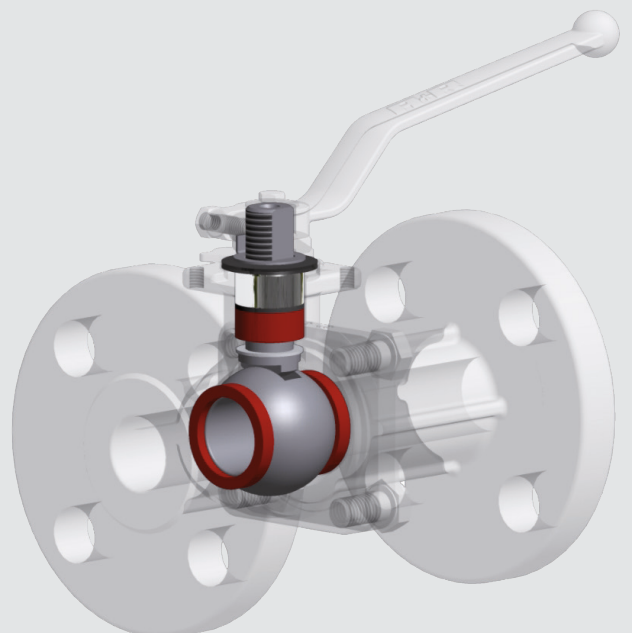


Soft Seated

Isolator Ball Valves

TYP KHL 510

- 1/2" - 6", ANSI Class 150-300
- Flange & face-to face-dimensions:
ASME B 16.5, B 16.5
- Materials:
CF8M 316 SS
A216 WCB
- Temperature range:
-58°F to +392°F

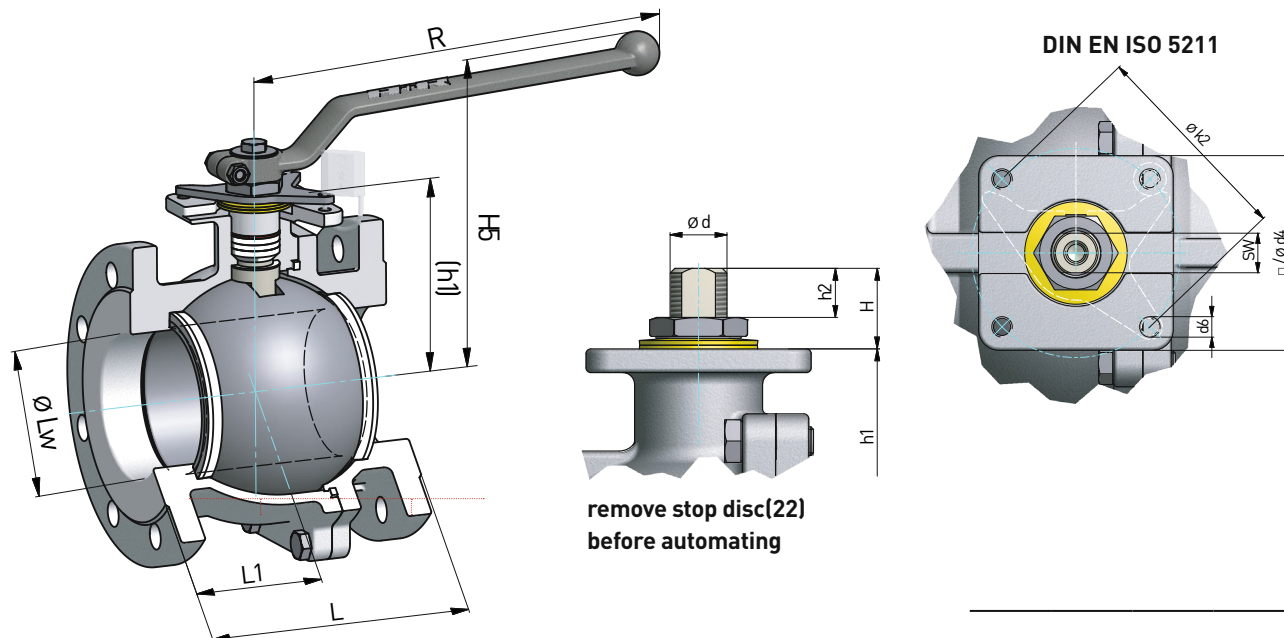


TYPE KHL 510

Dimensional Drawing

flange connection according to ASME B16.5

flange facing: standard raised face (others on request)



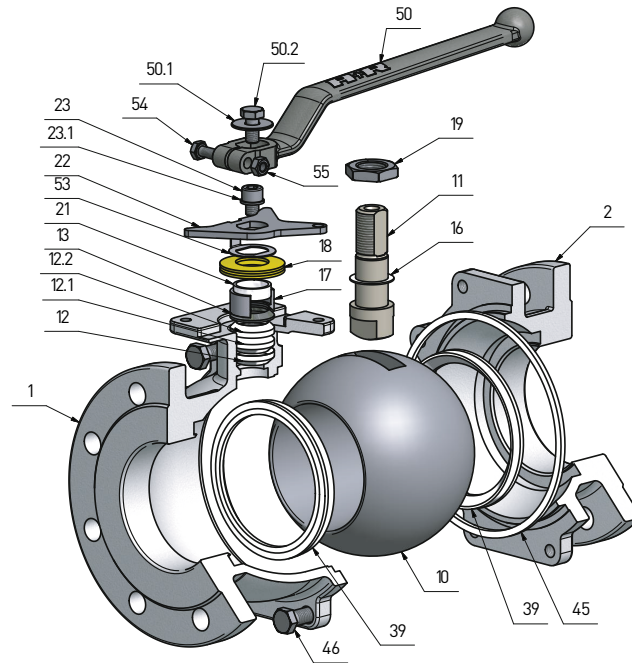
ISO 5211	Øk2	d6	Ø/d4
F 05	1,97	4 x M6	1,77
F 07	2,76	4 x M8	2,56
F 10	4,02	4 x M10	3,74
F 12	4,92	4 x M12	5,96

MEASURING GUIDE TYPE KHL 510

NPS	Lw	L	L1	H	h1	h2	Ød	SW	H5	R	Weight Lbs		ISO 5211	
Class	150 300	150 300	150 300	150 300	150 300	150 300	150 300	150 300	150 300	150 300	150 300	150 300	150 300	
1/2" in	0,63	4,25	5,50	1,89	1,89	0,81	2,17	0,43	0,49	4,76	6,10	5,1	6,4	F05
3/4" in	0,79	4,62	6,00	1,89	1,89	0,81	2,17	0,43	0,49	4,76	6,10	5,7	8,6	F05
1" in	0,98	5,00	6,50	1,89	2,48	0,81	2,17	0,43	0,49	4,76	6,10	6,4	9,9	F05
1 1/2" in	1,50	6,50	7,50	2,66	2,66	1,14	2,87	0,43	0,55	5,67	9,06	14,8	20,1	F07
2" in	1,97	7,00	8,50	2,66	3,17	1,14	3,19	0,67	0,55	6,02	9,06	20,3	26,5	F07
2 1/2" in	2,56	7,50	9,50	3,05	3,05	1,14	3,82	0,67	0,55	6,57	9,06	28,4	40,8	F07
3" in	3,00	8,00	11,12	3,25	3,64	1,34	4,53	0,79	M24x2	0,76	7,28	44,8	60,4	F10
4" in	3,94	9,00	12,00	3,64	4,04	1,34	5,20	0,79	M24x2	0,76	7,95	67,0	92,4	F10
6" in	5,91	15,50	15,88	6,89	7,68	2,24	8,44	2,24		1,26	10,91	208,3	252,4	F12

TYPE KHL 510

Exploded View



BILLS OF MATERIALS TYPE KHL 510

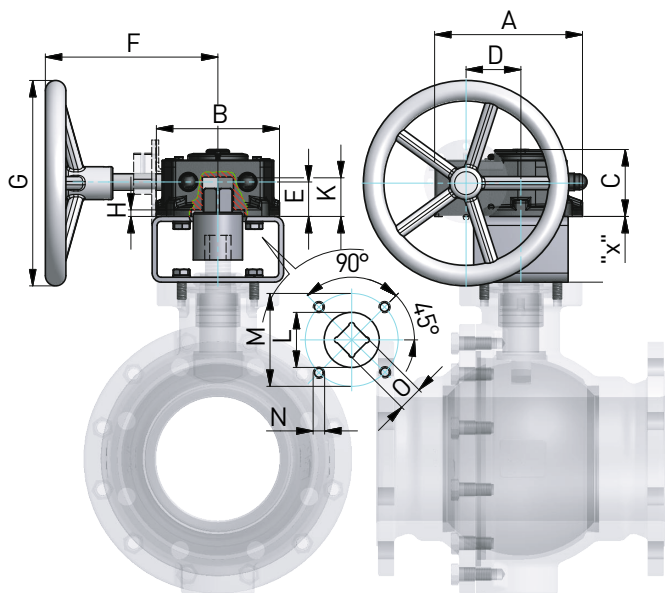
Positions Nr. / Item No.	Item	stainless steel version	carbon steel version
1	Body	CF8M 316 SS	A216 WCB
2	Side cap	CF8M 316 SS	A216 WCB
10	Ball	CF8M 316 SS	CF8 304 SS
11	Stem	316 SS	316 SS
12	Stem seal ¹	PTFE	PTFE
12.1	Stem seal ¹	PTFE	PTFE
12.2	Stem seal ¹	PTFE	Graphite
13	Anti-static ring ¹	PTFE+Carbon	-
16	Thrust ring ¹	RPTFE	RPTFE
17	Ring	303 SS	303 SS
18	Cup spring	301 SS	301 SS
19	Nut	304 SS	304 SS
21	Slide bushing ¹	RPTFE	RPTFE
22	Stop disc	304 SS	304 SS
23	Hex.-socket screw	304 SS	304 SS
23.1	Spring washer	304 SS	304 SS
39	Ball seat ¹	RPTFE	RPTFE
45	Body seal ¹	PTFE	Graphite
46	Hex bolt	316 SS	304 SS
50	Handle	304 SS	304 SS
50.1	Washer	304 SS	304 SS
50.2	Hex bolt	304 SS	304 SS
53	Lock washer	304 SS	304 SS
54	Hex bolt	304 SS	304 SS
55	Nut	304 SS	304 SS

¹ recommended spare parts

TYPE KHL 510

Accessories

manual worm gear type AR

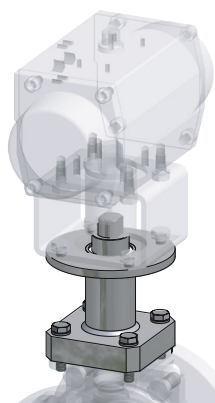


MANUAL WORM GEAR TYPE AR

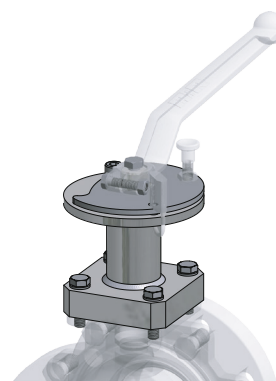
Type	A	B	C	D	E	F	G	H	K	L	M	N	O	ISO 5211
AR 1	5,02	4,02	2,46	2,05	1,13	8,54	7,87	0,19	2,13	1,67	4,02	M10	0,87	F10
AR 2	6,85	5,43	3,44	2,8	1,59	10,9	9,84	0,24	3,11	2,36	4,92	M12	1,06	F12
AR 3	8,898	7,87	3,64	3,39	1,65	12	19,7	0,31	3,23	2,95	5,51	M16	1,42	F14
AR 4	12,7	11,2	4,96	5,12	2,17	15,2	23,6	0,39	4,37	3,94	6,5	M20	1,81	F16

DIMENSION OF BRACKET "x" STANDARD

gear box	ball valve	
	ISO 5211	F 10
AR 1	F 10	3,15
AR 2	F 12	3,15
AR 3	F 14	-



ISO - flange - support tube



locking, blocking device

DESIGN FEATURES:

- PED 97/23/EG
- AD-2000
- TA-Luft
- Fire-Safe per API-607 5th edition, ISO 10497-5:2004
- Leakage rate "A" EN 12266 / API-598

A+R - Armaturen® GmbH

Altenhagener Str. 4a // 32107 Bad Salzufen // Tel. +49 5208 - 9102 - 0 // Fax. +49 5208 - 9102 - 90

Email: postoffice@ar-armaturen.com // Web: www.ar-armaturen.com